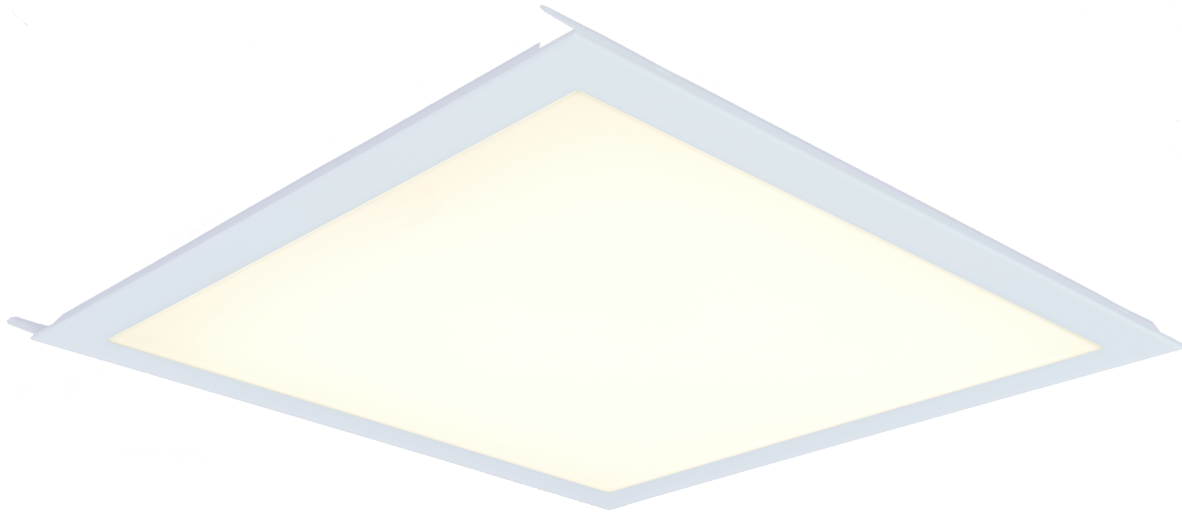


LED- Quattro-Line

Luminaire with opal acrylic glass cover IP40/IP20

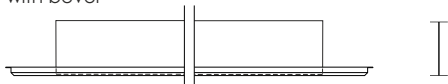


Dimension drawing module L = 600/625 mm

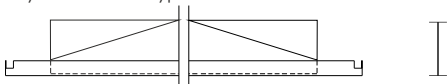
clip-in/hinge down luminaire type KK
with bevel



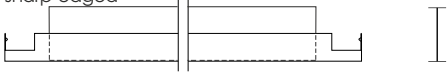
Lay-in-luminaire type EK
with bevel



Lay-in-luminaire type EKA



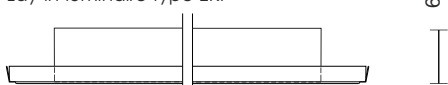
clip-in/hinge down luminaire type KK
sharp edged



Lay-in-luminaire type EK
sharp edged



Lay-in-luminaire type EKP



Technical characteristics:

Voltage: 220 - 240 V, 50 - 60 Hz
 Protection class: I
 Protective system: Front side Ip40
 Back side IP 20
 Colour index: 840 - high colour rendering
 Electric power: 35 W
 inclusive emergency lighting: possible for safety lighting installation according to EN 50172
 Control gear: LED-Driver directly mounted to the luminaire housing, dimmable, long life cycle of the device
 Connection: GST 18i3 H05VV-3 3x1,5 3-pin plug-in system prefabricated supplied with connection cable
 Case: galvanized steel, powder coated, match to the ceiling system
 LED-Luminaires: suitable for lighting of computer screen workplaces according to EN12464-1
 Delivery: pre finished
 luminaire luminousflux: 1901 lm
 colour temperature/ light colour: 4000K neutralwhite