

LED- Quattro-Line

Luminaire with opal acrylic glass cover IP40/IP20

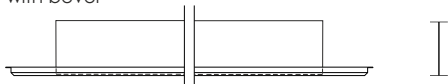


Dimension drawing module L = 600/625 mm

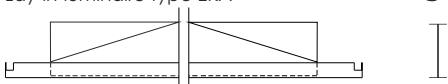
clip-in/hinge down luminaire type KK
with bevel



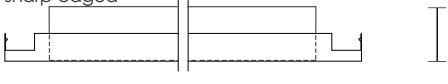
Lay-in-luminaire type EK
with bevel



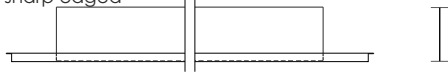
Lay-in-luminaire type EKA



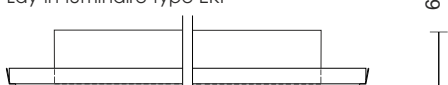
clip-in/hinge down luminaire type KK
sharp edged



Lay-in-luminaire type EK
sharp edged



Lay-in-luminaire type EKP



Technical characteristics:

Voltage:	220 - 240 V, 50 - 60 Hz
Protection class:	I
Protective system:	Front side Ip40 Back side IP 20
Colour index:	840 - high colour rendering
Electric power:	35 W
device life cycle:	50 000 h
inclusive emergency lighting:	possible for safety lighting installation according to EN 50172
Control gear:	LED-Driver directly mounted to the luminaire housing, dimmable, long life cycle of the device
Connection:	GST 18i3 H05VV-3 3x1,5 3-pin plug-in system prefabricated supplied with connection cable
Case:	galvanized steel, powder coated, match to the ceiling system
LED-Luminaires:	suitable for lighting of computer screen workplaces according to EN12464-1
Delivery:	pre finished
luminaire luminousflux:	1901 lm
colour temperature/ light colour:	4000K neutralwhite