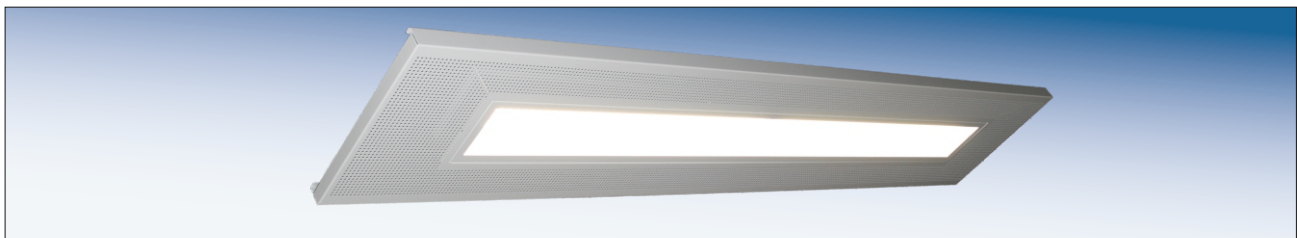


# Geipel® - metal ceilings LED luminaire systems **Superline** Superline LFK-LED-MP 4800 - 1200



Geipel® - **Superline** our state-of-the-art recessed LED luminaire best geared to metal ceiling systems. The homogenous frameless ceiling element is characterized by first class areal illumination. A microprism diffusor made of quality PMMA-acrylic glass ensures evenly distributed lighting. LED-modules and converter offer a high level of efficiency. She is suitable for F-30 elements. The luminaire is equipped according to highest technical standards, can be dimmed up to 1%, is controllable by daylight and comes with DALI-converter on request. The Geipel® - **Superline** is suitable for workplace lighting accordance with EN12464-1.



## **Technical characteristics:**

Luminaire dimension:	1200 x 124 mm H=69 mm
Light colour:	4000 Kelvin neutral white
Voltage:	220-240V / 50-60 Hz
Protection class:	I
Protective system:	IP 20
Electric power:	50 W
Colour rendering index:	85 - high colour rendering
Luminous flux:	1746 lm
device life cycle :	50000 h
inclusive emergency lighting:	possible for safety lighting installation according to EN 50172
Control gear:	LED-Driver directly mounted to the luminaire housing, dimmable, device life cycle up to 100000h
Lamp:	LED
Connection:	5-pin plug-in system prefabricated on request or supplied with connection cable
Case:	galvanized steel, powder coated, match to the ceiling system
distribution of Light:	by use of Micro-prisms-diffuser consisting of acrylic glass PMMA
delivery:	Luminaire are completely integrated into the ceiling tile and packaged as one piece - ready for mounting